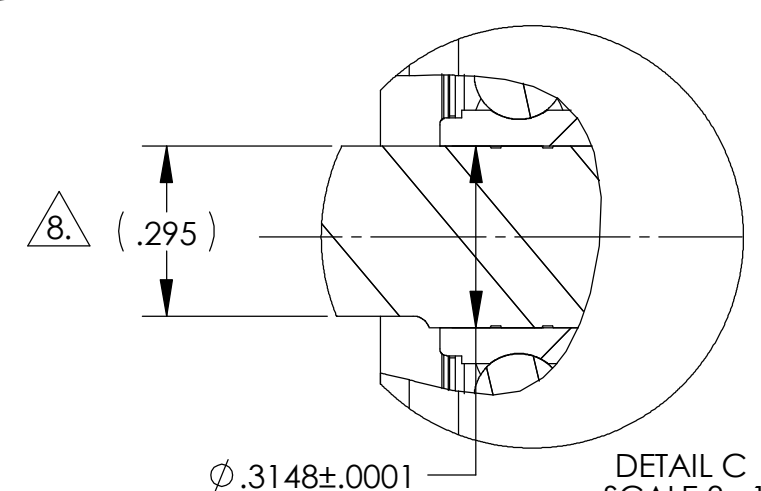
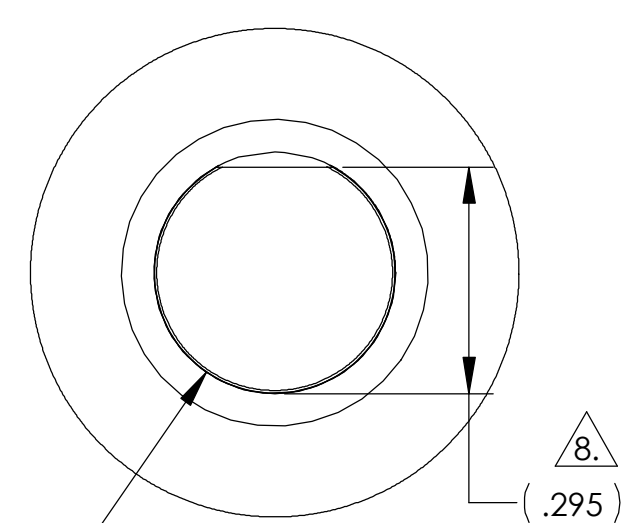
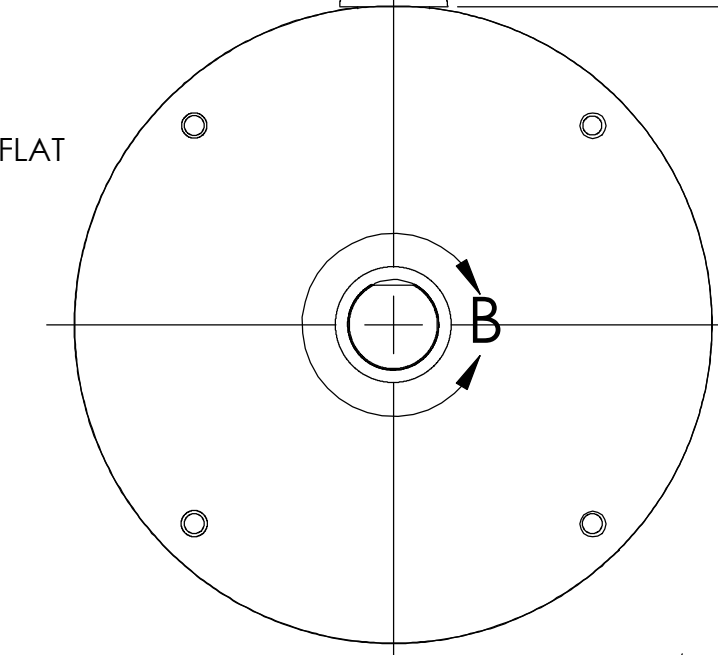
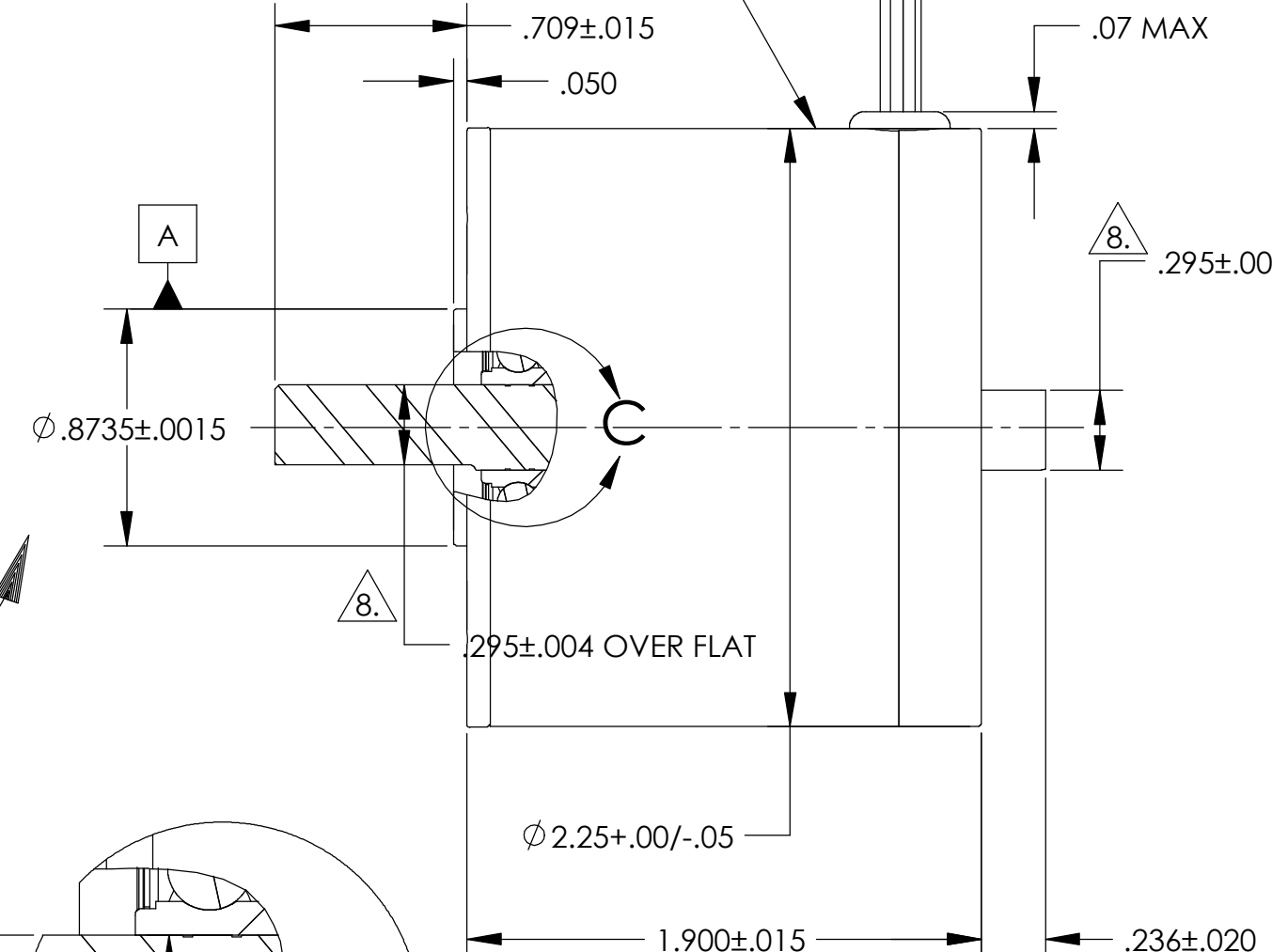
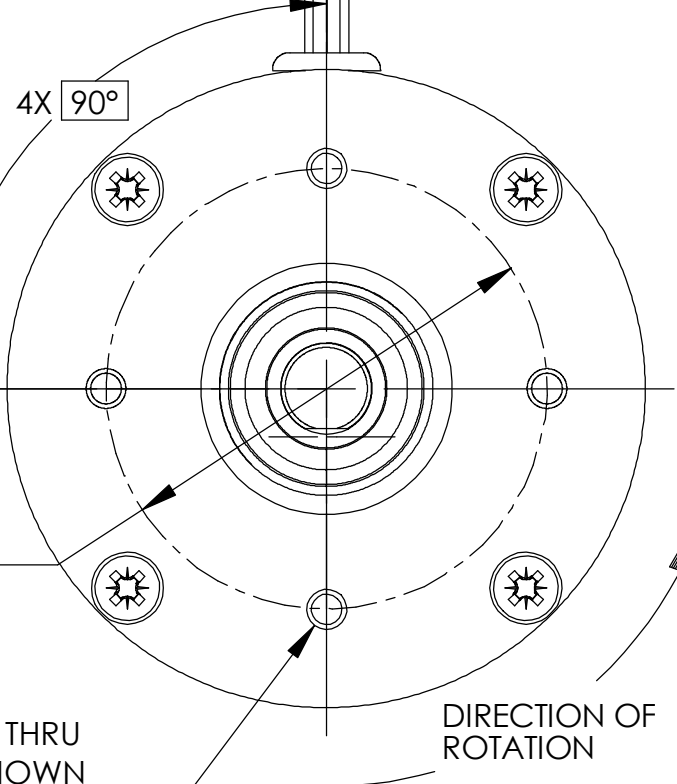
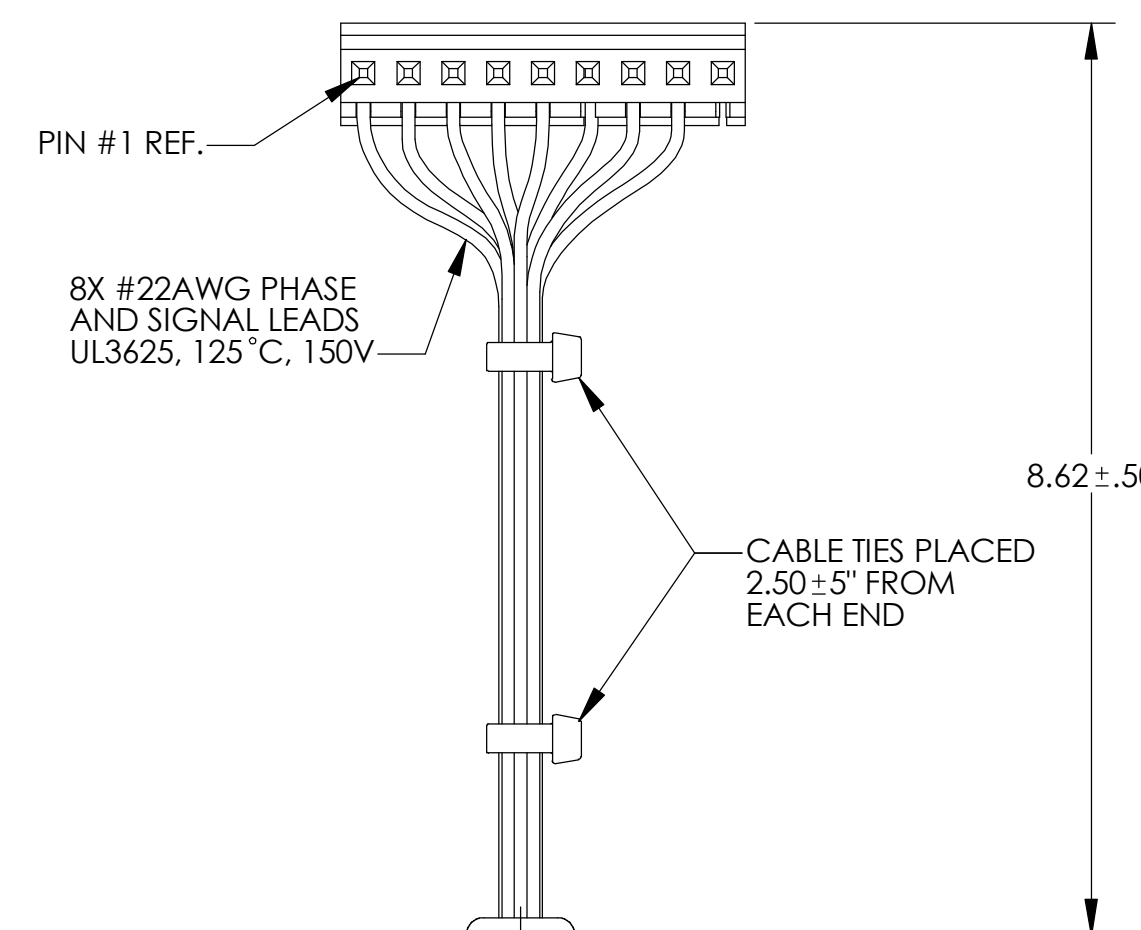
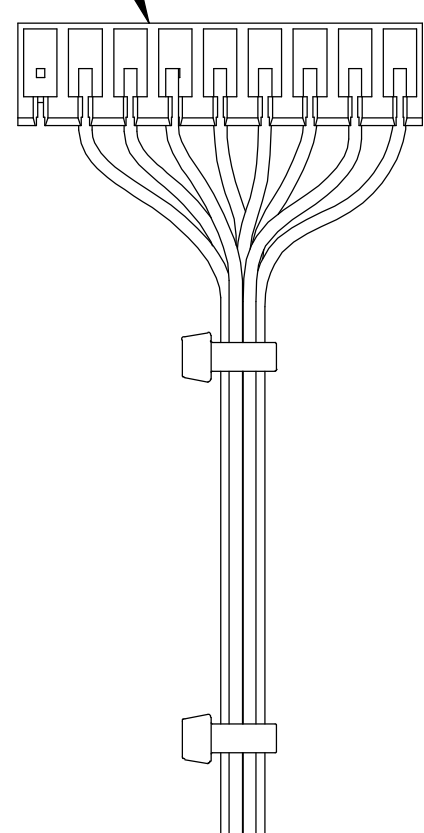


9-PIN CONNECTOR
AMP P/N 640428-9
ACCEPTS .045 SQ. OR ROUND
POSTS ON .156 CENTERS

NOTES: UNLESS OTHERWISE SPECIFIED

1. INTERPRET DRAWING PER ANSI Y14.5.
2. OPEN COLLECTOR OUTPUTS. PULL-UP RESISTORS BETWEEN V_{CC} AND OUTPUTS.
3. MOUNTED TO 6" X 6" X 1/4" ALUMINUM PLATE, STILL AIR.
4. SHAFT MATERIAL: 416 S.S.
5. HOUSING AND END CAP MATERIAL: ALUMINUM
6. DIRECTION OF SHAFT ROTATION: CCW
7. MAXIMUM WINDING TEMPERATURE OF 155°.
8. FLATS LOCATED 180° APART, ONE ON EACH END OF THE SHAFT AS SHOWN
9. MAXIMUM ALLOWABLE FRICTION TORQUE AT ROOM TEMPERATURE IS: 12 oz-in MAX.

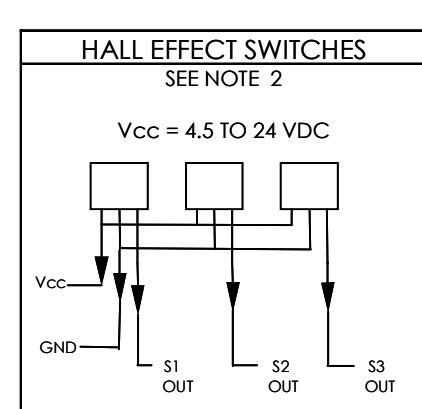
REVISIONS				
ZONE	REV.	DESCRIPTION	DATE	APPROVED
	F	REV/ECN's MU25781 & MU25782 FEM	12/14/04	



TIMMING DIAGRAM		(8 POLE) CCW ROTATION															
DEGREES	ELEC.	0	60	120	180	240	300	360	60	120	180	240	300	360			
	MECH.	0	15	30	45	60	75	90	105	120	135	150	165	180			
S1 OUT																	
S2 OUT																	
S3 OUT																	
A COIL		--	0	+	+	0	--	--	0	+	+	0	--	--			
B COIL		+	+	0	--	--	0	+	+	0	--	--	0	+			
C COIL		0	--	--	0	+	+	0	--	--	0	+	+	0			

PERFORMANCE AT 25°C				
PARAMETER	SYMBOL	UNITS	TOLERANCE	VALUE
TERMINAL VOLTAGE	V	Volts DC	Nominal	12
PEAK TORQUE	T _P	oz-in	Maximum	334
CONTINUOUS STALL TORQUE	T _C ¹	oz-in	Maximum	44
NO LOAD SPEED	S _{NL}	rpm	Nominal	3400
RATED SPEED	S _R	rpm		2900
RATED TORQUE		oz-in	Maximum	40
RATED CURRENT		Amps		8.8
RATED POWER		Watts		86
TORQUE SENSITIVITY	K _T	oz-in/Amp	±10%	4.75
BEMF CONSTANT	K _E	Volts/Krpm	±10%	3.51
TERMINAL RESISTANCE	R _M	Ohms	±12%	0.17
TERMINAL INDUCTANCE	L _M	mH	±30%	0.146
MOTOR CONSTANT	K _M	oz-in/√Watts	Nominal	12.8
ROTOR INERTIA	J _M	(oz-in-sec ²)X10 ⁻³	Nominal	0.99
WEIGHT		oz	Nominal	15.0

CONNECTION TABLE		
CONNECTOR PIN NO.	P.C.B. HOLE NO.	LEAD COLOR
1	Vcc	YELLOW
2	Gnd	GRAY
3	A coil	VIOLET
4	B coil	BLACK
5	C coil	GREEN
6	S1	BROWN
7	S3	WHITE
8	S2	BLUE
9	NC	



UNLESS OTHERWISE SPECIFIED DIMENSIONS ARE IN INCHES		CAD GENERATED DRAWING, DO NOT MANUALLY UPDATE	
TOLERANCES ARE:		APPROVALS	
DECIMALS .XX ±.010	ANGLES ±0°30'	DRAWN D. McCOY	DATE 11/20/03
XXX ±.005	FRACTIONS ±1/64	CHECKED D. McCOY	12/15/03
XXXX ±.0005		ENGR D. THOMPSON	12/8/03
DO NOT SCALE DRAWING		RELEASED D. McCOY	12/9/03
MATERIAL		MFG ENGR D. COX	12/9/03
FINISH		SHOP ENGR	
		GA B. LITTLE	12/8/03

MOOG COMPONENTS GROUP

TITLE: **BRUSHLESS D.C. MOTOR OUTLINE DRAWING**

SIZE: C CAGE CODE: 4H618 DWG. NO.: BN23HP-18DA-04CH

SCALE: 2:1 CAD FILE: BN23HP-18DA-04CH SHEET 1 OF 1